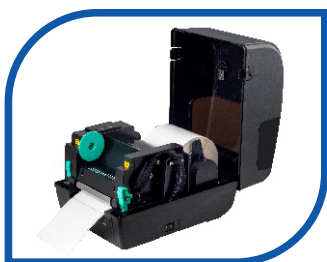
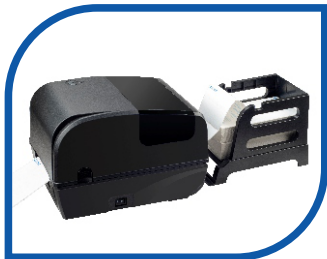
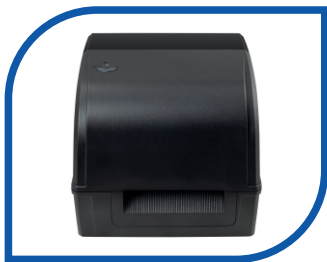


GB TT-426B

Features

- Equipped dual motor.
- Print speed up to 127mm/s.
- Ribbon roll capacity 300m, 25.4mm Ribbon Roller



Printing Features

Resolution	203 DPI
Print method	Thermal Transfer / Direct Thermal
Max.Print speed	127 mm (5") / s
Max.print width	108 mm (4.25")
Max.print length	1778 mm (70")

Media

Media type	Continuous, gap, black mark, fan-fold and punched hole
Media width	25.4-118mm (1.0"-4.6")
Media thickness	0.06-0.254 mm (2.36~10mil)
Media core diameter	25.4 ~ 76.2 mm (1" ~ 3")
Label length	10 - 1778 mm(0.39" ~ 70")
Label roll capacity	127 mm (5") OD (External Diameter)
Ribbon capacity	Max.300m
Ribbon width	110 mm
Ribbon core inner diameter	25.4 mm (1")

Performance Features

Processor	32-bit CPU
Memory	8MB Flash Memory/ 8MB SDRAM/ Flash memory can be expanded Max.4Gb
Interface	Standard version: USB Optional:Lan/WIFI/Bluetooth/TF card

Fonts/Graphics/Symbologies

Internal fonts	8 alpha-numeric bitmap fonts, Windows fonts are downloadable from software.
1D barcode	Code 39, Code 93, Code 128UCC, Code 128 subsets A, B, C, Codabar, Interleaved 2 of 5, EAN-8, EAN-13, EAN-128, UPC-A, UPC-E, EAN and UPC 2(5) digits add-on, MSI, PLESSEY, POSTNET, China POST
2D barcode	PDF-417, Maxicode, DataMatrix, QR code, Aztec
Rotation	0° 90° 180° 270°
Emulation	TSPL EPL ZPL DPL

Physical Features

Dimension	299 mm (D) x 235 mm (W) x 198.3 mm (H)
Weight	2.55 kg

Warranty

1 year warranty on Printer and *6 months conditional warranty on print head.

Software

Driver	Windows / Linux / Mac
SDK	Windows / iOS / Android
Power supply	
Input	AC 110-240V,1.8A, 50-60Hz
Output	DC 24V, 2.5A, 60W

Environmental Conditions

Operation	5 ~ 40°C(41~104°F) Humidity: 25 ~ 85% non-condensing
Storage environment	-40 ~ 60°C(-40~140°F) Humidity:10 ~ 90% non-condensing